

Savage A40

Professional Auto-Darkening Welding Helmet



The SAVAGE A40 helmet has been designed to meet the needs of a variety of welders, providing a high tech lightweight shell to protect from heat, sparks and spatter. Utilising the latest ADF technology, the welding lens gives a high clarity of view with True Color, resulting in an excellent optical quality.

This can be used for all welding processes, plasma cutting, carbon arc gouging, oxyfuel gas welding and grinding applications.

- Wide field of vision & increased spatial awareness
- Sensitivity & delay setting for range of welding amperages
- Four arc sensors for faster auto darkening response
- True Colour for brighter view and enhanced colour definition
- Grind mode option with externally activated button

Visit esab.com for more information.

Application Range

- SMAW / MMAW
- TIG DC & AC; TIG Pulse DC & AC
- MIG / MAG; MIG / MAG Pulse
- Plasma Arc Cutting (PAC) & Welding (PAW)
- Air Carbon Arc Cutting (CAC-A)
- Oxyfuel Gas Welding
- Grinding

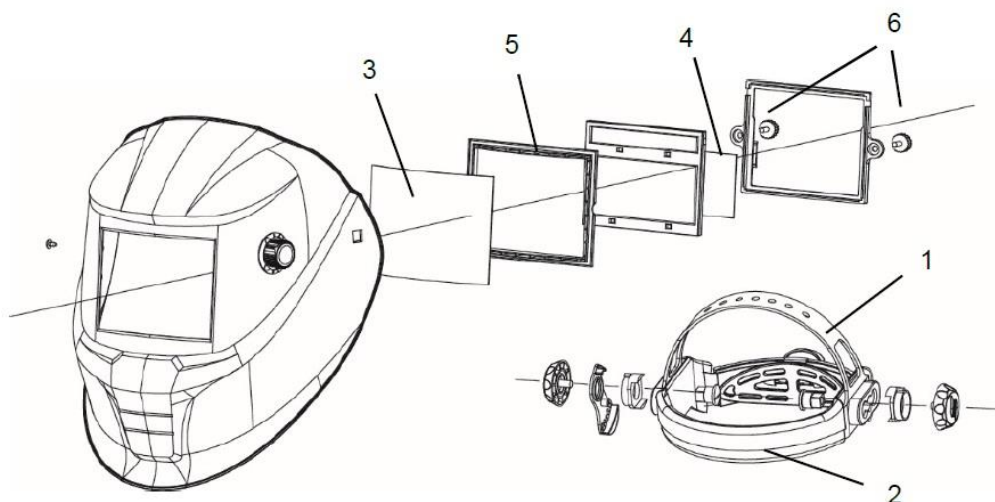


Savage A40 ADF

Specifications	
	SAVAGE A40
Cartridge Dimensions, mm	110 x 90 x 7.8
Viewing Area, mm	100 x 50
Lens Shade	DIN 9 - 13
Grind Mode	Shade 4
Power Supply	Solar cell, no battery change. Low battery alert
Sensors	4
Switch Time, ms	Light - Dark: 0.07
Switch Time, s	Dark - Light: 0.1 - 0.9
Classification	1 / 1 / 1 / 2
Weight, gms	490
Standards	CE EN379 and EN175, ANSI, CSA, AS/NZS

Ordering Information	
SAVAGE A40 9-13 Yellow	0700 000 481

Wear and Spare Parts		
1	Headgear	0700 000 483
2	Sweatband	0700 000 414
3	Front Cover Lens	0700 000 010
4	Inside Cover Lens	0700 000 482
5	ADF Cradle	0700 000 418
6	Lens Retainer with Screw	0700 000 419



2020-02-20 / ESAB reserves the right to alter specifications without prior notice



ESAB / www.esabindia.com

Regd & H. O. : ESAB India Limited
 13, Industrial Estate, III Main Road
 Ambattur, Chennai – 600 058
 Email: info@esab.co.in

